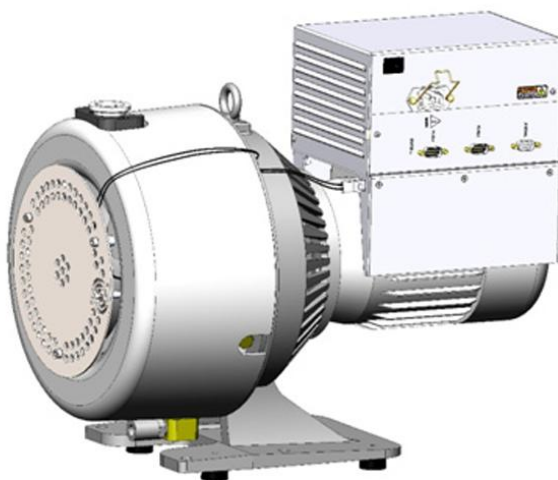


TriScroll 620 Firmware Upgrader Inficon



Item Descriptive Contents

1. Purpose
2. Scope
3. Authorized personnel
4. General information and Safety notes
5. Tools and Fixtures
6. Spare parts
7. Upgrade process steps

1. Purpose

This document provides instructions how to update the firmware of TS620 inverter pumps manufactured specifically for Inficon.

2. Scope

Enable authorized service partners to update the firmware of TS620 pumps P/N X3828-69620 and X3828-69620. This SW allows to update the controller without losing its calibration data.

3. Authorized personnel

Repair and service activities must be performed only by trained and authorized service personnel. This procedure is destined for professional use. The user should read this information memo and any other additional information supplied by Agilent before handling. Agilent will not be held responsible for any events occurring due to non-compliance, even partial, with these instructions, improper use by untrained persons, non-authorized interference with the equipment or any action contrary to that provided for by specific national standards.

4. General information and safety notes

The following paragraphs contain all the information necessary to guarantee the safety of the operator when using the structure.

This manual uses the following standard protocol:

WARNING!



The warning messages are for attracting the attention of the operator to a particular procedure or practice which, if not followed correctly, could lead to serious injury.

CAUTION!

The caution messages are displayed before procedures which, if not followed, could cause damage.

5. Required Tools and fixtures

Test equipment
PC running on Windows. RS232 cable.
Upgrader Software

6. Spare Parts

Not applicable.

7. Upgrade process steps

Intro

The software guides the user during all the updating process.

For each connected controller, the first step is to check the model to ensure the correct one is updated.

If this step is OK, the next one reads the Serial Number.

After the update, the controller must be power off and power on to check the update was correct.



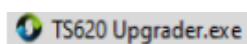
Connection cable:

1. Power Cable
2. RS232 Cable

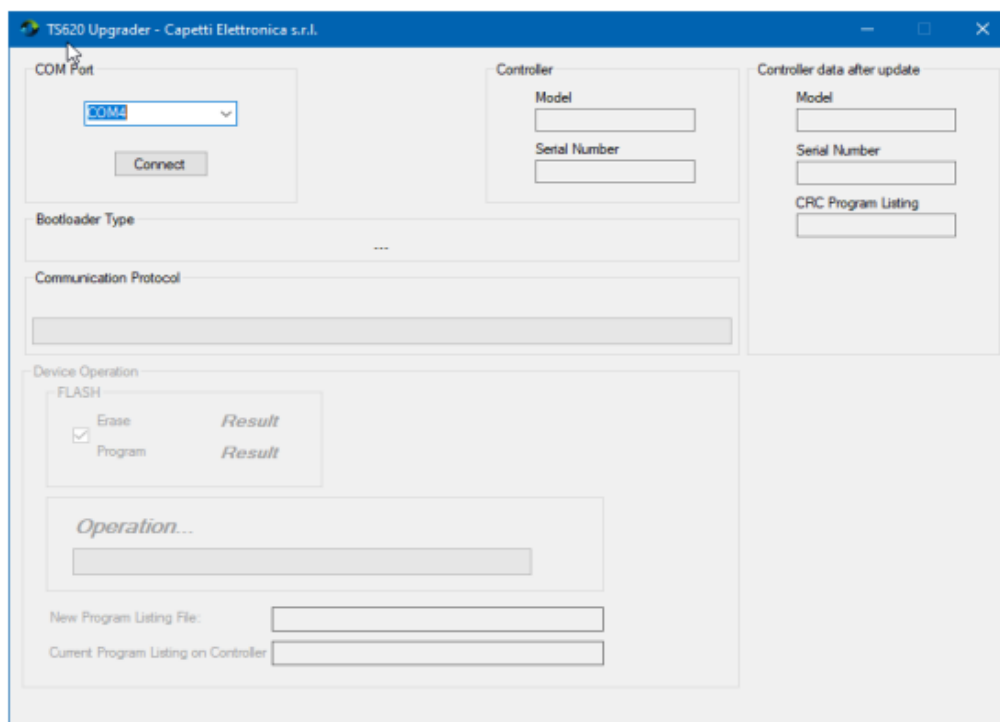


The serial cable can be a classic USB-232 Converter as show beside or a standard 232 cable depending on the type of computer being used.

Power On the Controller, wait about 5 sec, then run the program from [TS620 Upgrader] Folder.

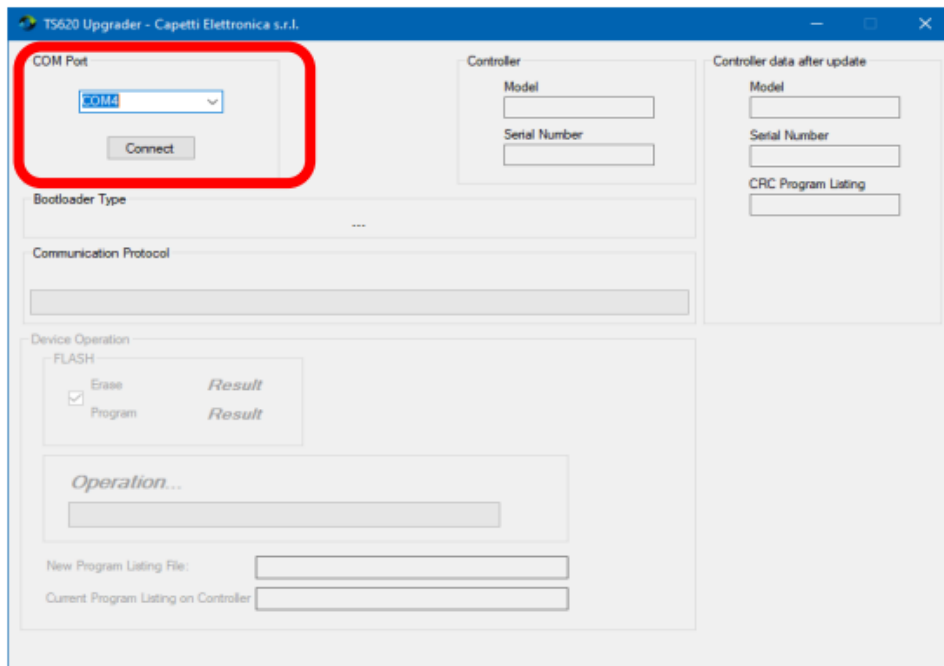


After the SW startup, this screen is shown.

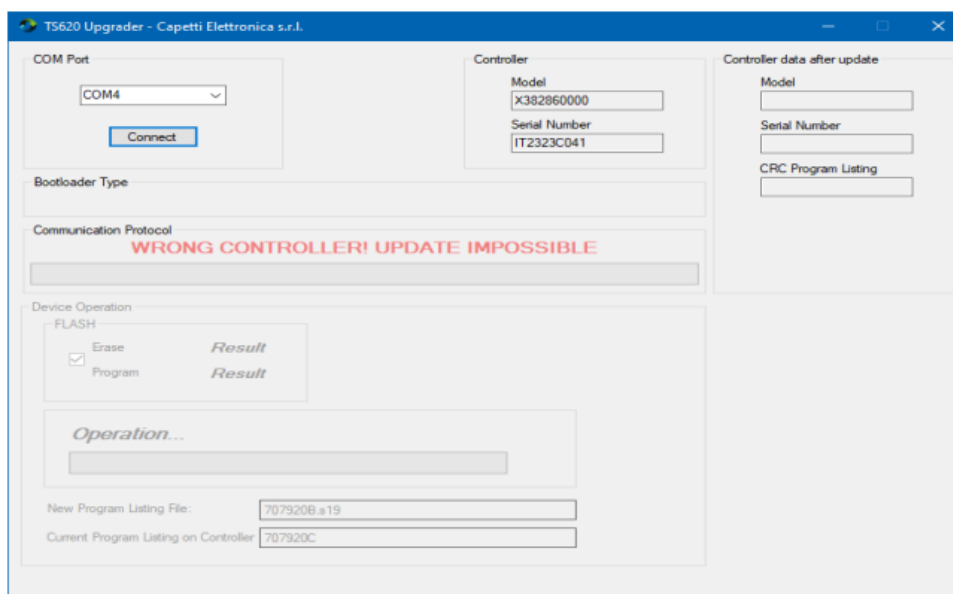


The next step are:

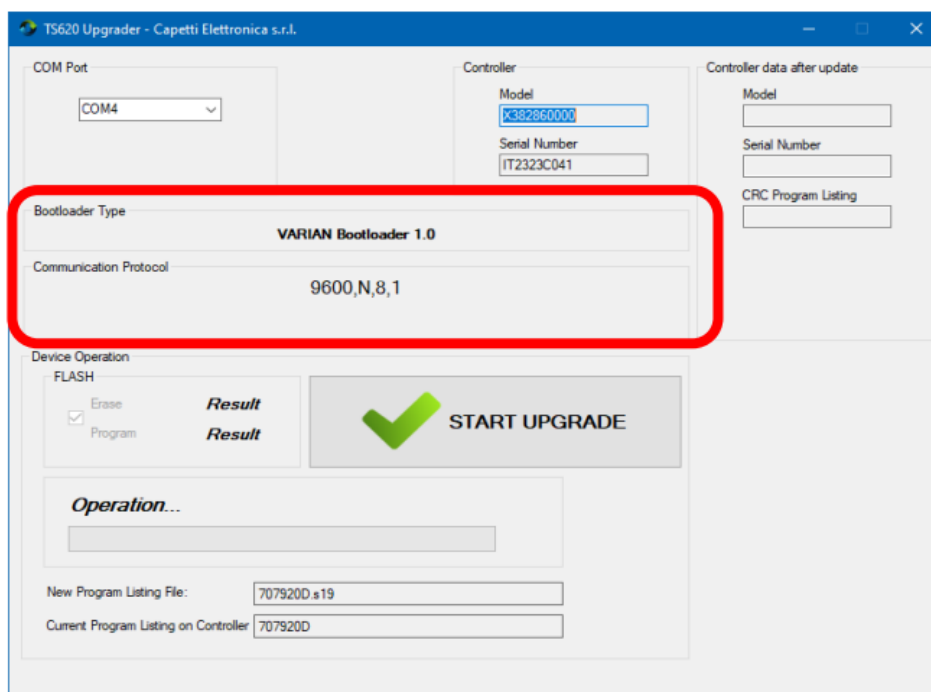
1. Select the proper serial COM port from those available.
2. Power On the target.
3. Click **"Connect"** button.



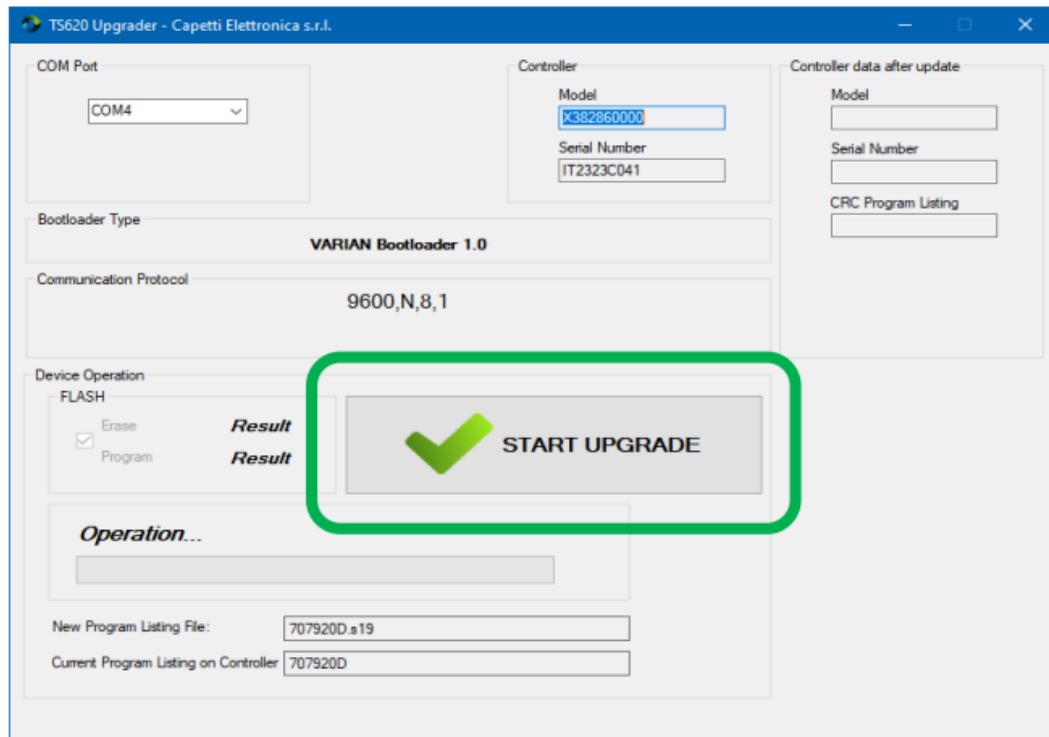
If an alive controller is connected to the selected serial port, the SW updates the informations about Model and Serial Number. If Model is not right the update procedure terminate with the message : **WRONG CONTROLLER! UPDATE IMPOSSIBLE**



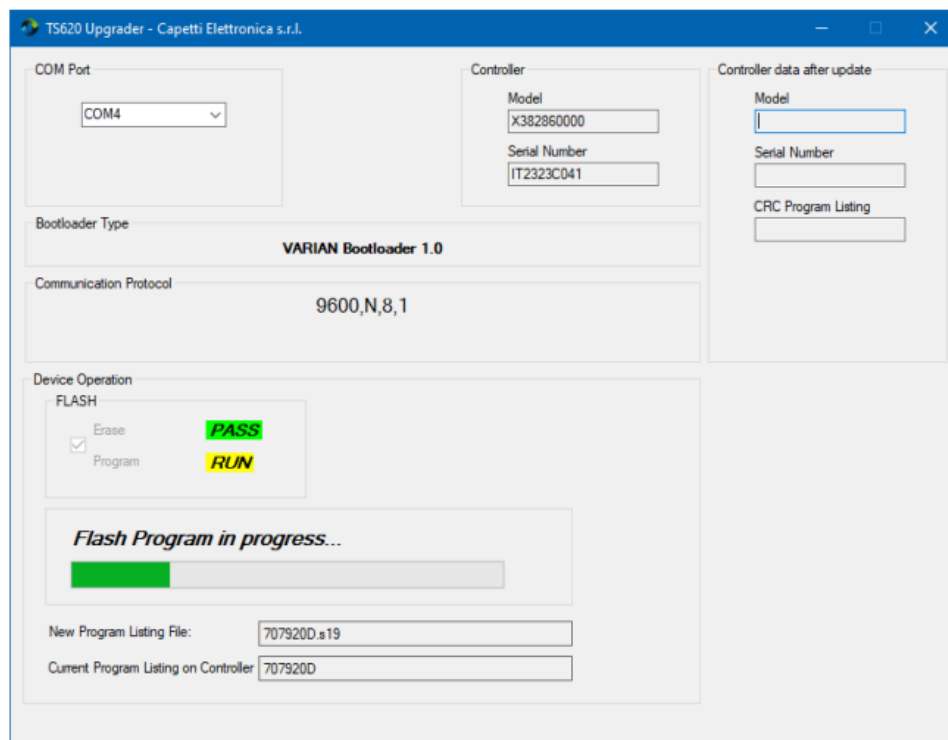
If the controller is right, the SW switch the controller in boot mode to start the update procedure.



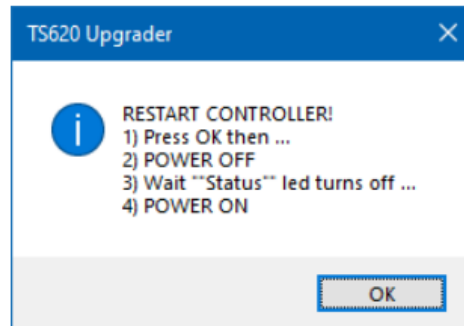
At this point click the button in evidence to start the updating process.



Now in the Device Operation box , are displayed each operations with the relative result.



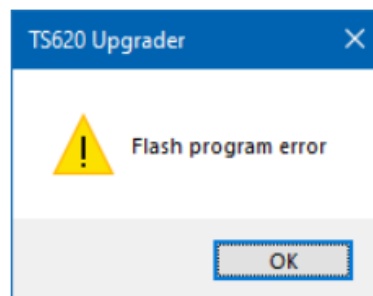
At the end of the procedure a message ask the user to Restart the controller...



The operations must be the following:

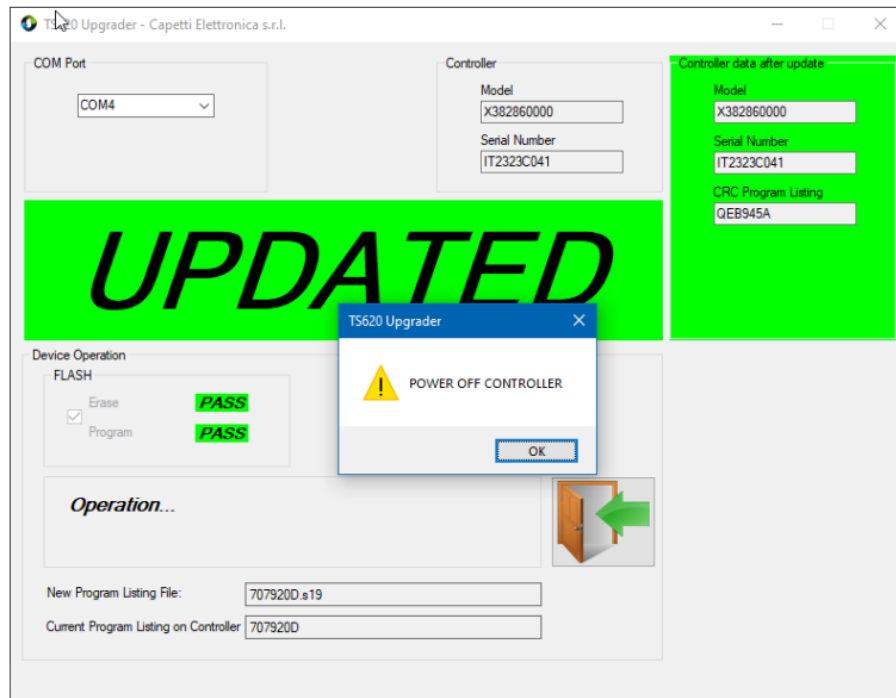
1. Press OK then ...
2. Power OFF controller.
3. Wait until controller led status turn off or if led is already off wait at least 10 sec
4. Power ON Controller.

If something fails in any phase of the procedure , the follow message is shown.

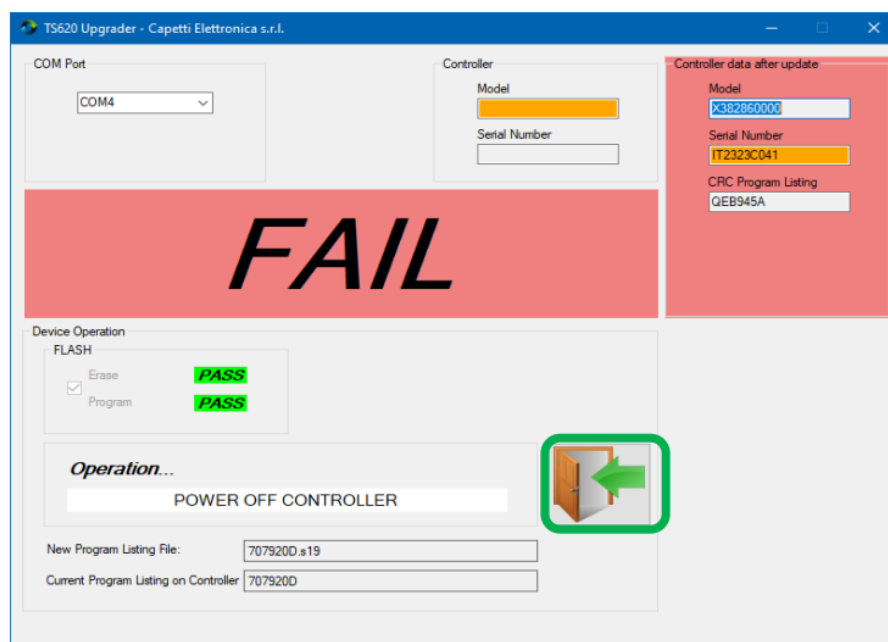


The phase in error is marked with **FAIL** and also the final result of the update is **FAIL**.

Othwise, when the SW is able to communicate with the controller, The Model and CRC Program Listing are checked and if all data are OK, the SW confirm the update procedure succesfully ended with the following screen ...



But if any of the previous data read is not correct, the SW warns you that the update process has failed. This screen is shown.



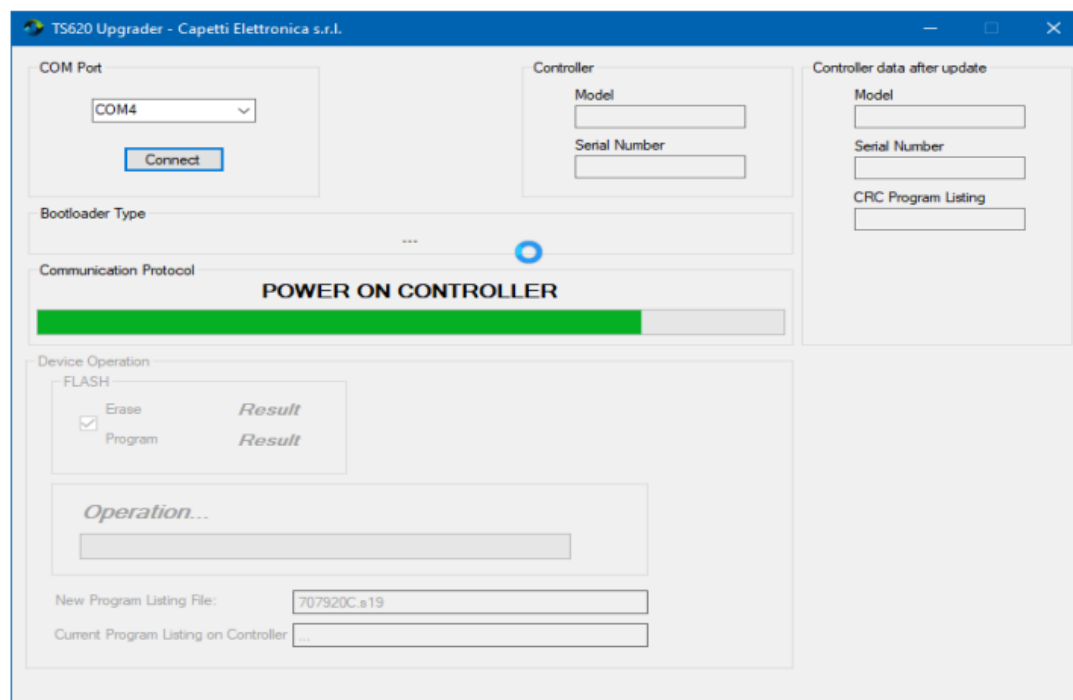
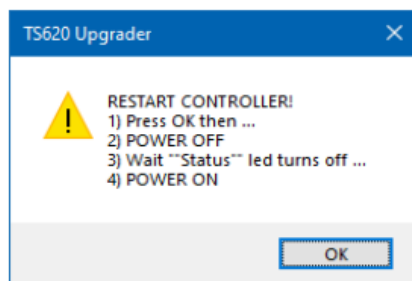
In order to update another device, please Power Off the controller and press the evidence button.

Useful information

In case of a controller not programmed or in case of a controller on which the first update procedure failed , the following procedure must be followed

1. Select the proper serial COM port from those available.
2. Click Connect

After a little bit of time , the SW ask the user to Power Off the controller and Restart.



In case of a positive outcome, the SW will re-present the screen showed on page 8, but without the controller data.

At this point you can proceed with the update sequence described above.